

Could It Be Sepsis?

Supplement to Infographic: 2018



This supplement is intended to provide additional data on methods used to obtain information found on the sepsis infographic.

The red box indicates which part of the infographic that slide is referring to →

Click on the underlined links for more information. They are hyperlinked to the source. ↙

Source:

Centers for Disease Control and Prevention - [Stay healthy. Protect yourself from sepsis.](#)



Background

According to the Centers for Disease Control and Prevention, sepsis is the body's extreme reaction to an infection. Sepsis is common and can be deadly. Without timely treatment, it can rapidly lead to tissue damage, organ failure and death. The following infographic highlights the causes, risk factors, warning signs and treatment of sepsis. The purpose of this infographic is to increase awareness of sepsis and promote improved community health.

Sepsis

In the United States, more than **1.7 MILLION PEOPLE** experience sepsis, an extreme reaction to an infection.

- Source:
Centers for Disease Control and Prevention –
[Sepsis: Data & Reports](#)

COULD IT BE SEPSIS?
Know the Signs and Act Fast

In the United States, more than **1.7 MILLION PEOPLE** experience sepsis, an extreme reaction to an infection. Sepsis can lead to tissue damage, organ failure and death.

LEADING CAUSES:

- Skin infections (such as cellulitis)
- Lung infections (such as pneumonia)
- Kidney infections (such as urinary tract infections)
- Abdominal infections (such as diverticulitis)

PEOPLE AT HIGH RISK:

- The elderly
- The very young
- Those with chronic health conditions (diabetes, lung disease, cancer, kidney disease)
- Those with weak immune systems

WARNING SIGNS:

- Fever, shivering or feeling very cold
- Elevated heart rate
- Rapid breathing
- Disorientation or confusion
- Clammy or pale skin

TREATMENT:

- Seeking the source of the infection
- Using antibiotics
- Maintaining blood flow to organs

PREVENTION:

- Practice good hygiene, such as washing your hands properly and cleaning cuts
- Discuss with your doctor the best ways to prevent infections
- Get recommended vaccines
- Be aware of the warning signs of sepsis
- Seek medical care immediately when an infection does not get better or worsens

univera
HEALTHCARE

Sepsis

Sepsis can lead to tissue damage, organ failure and death.

- Source:
Centers for Disease Control and Prevention –
[What is sepsis?](#)

COULD IT BE SEPSIS?
Know the Signs and Act Fast

In the United States, more than **1.7 MILLION PEOPLE** experience sepsis, an extreme reaction to an infection. Sepsis can lead to tissue damage, organ failure and death.

LEADING CAUSES:

- Skin infections (such as cellulitis)
- Lung infections (such as pneumonia)
- Kidney infections (such as urinary tract infections)
- Abdominal infections (such as diverticulitis)

PEOPLE AT HIGH RISK:

- The elderly
- The very young
- Those with chronic health conditions (diabetes, lung disease, cancer, kidney disease)
- Those with weak immune systems

WARNING SIGNS:

- Fever, shivering or feeling very cold
- Elevated heart rate
- Rapid breathing
- Disorientation or confusion
- Clammy or pale skin

TREATMENT:

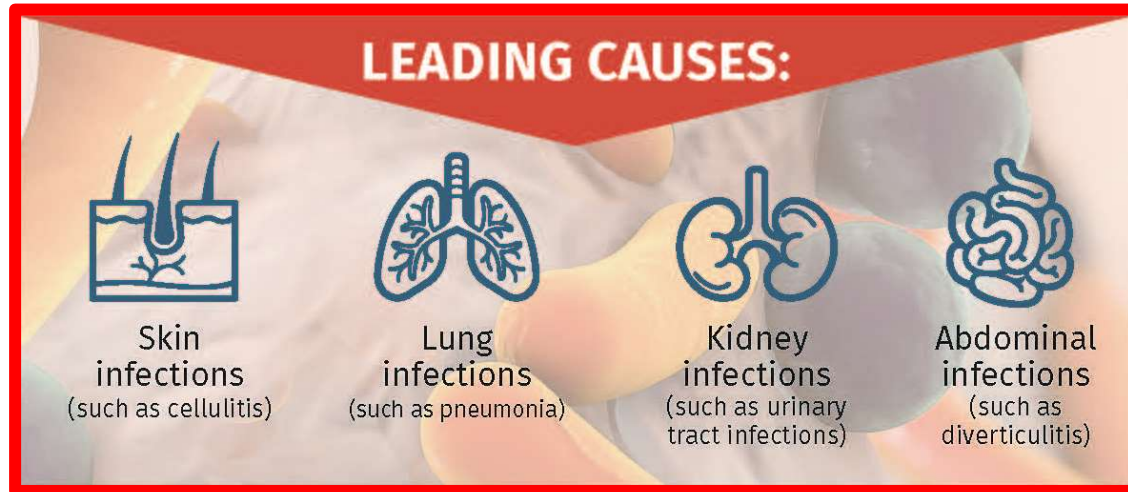
- Seeking the source of the infection
- Using antibiotics
- Maintaining blood flow to organs

PREVENTION:

- Practice good hygiene, such as washing your hands properly and cleaning cuts
- Discuss with your doctor the best ways to prevent infections
- Get recommended vaccines
- Be aware of the warning signs of sepsis
- Seek medical care immediately when an infection does not get better or worsens

univera
HEALTHCARE

Leading causes of sepsis



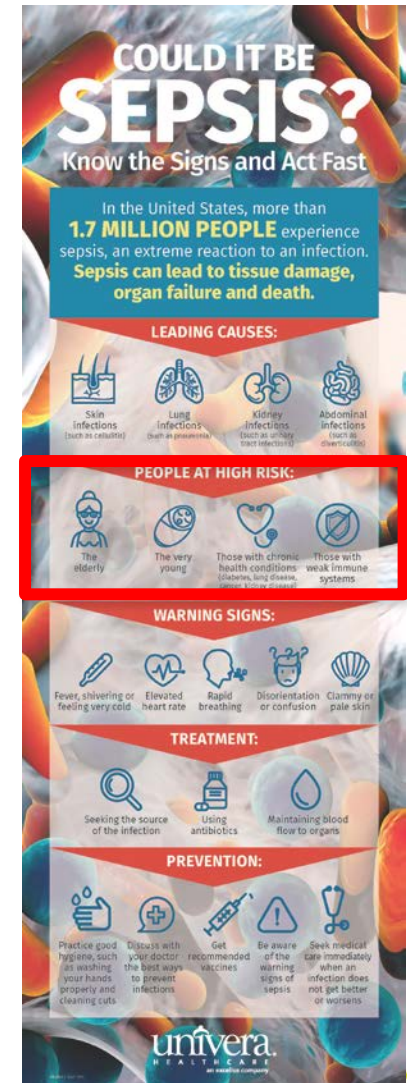
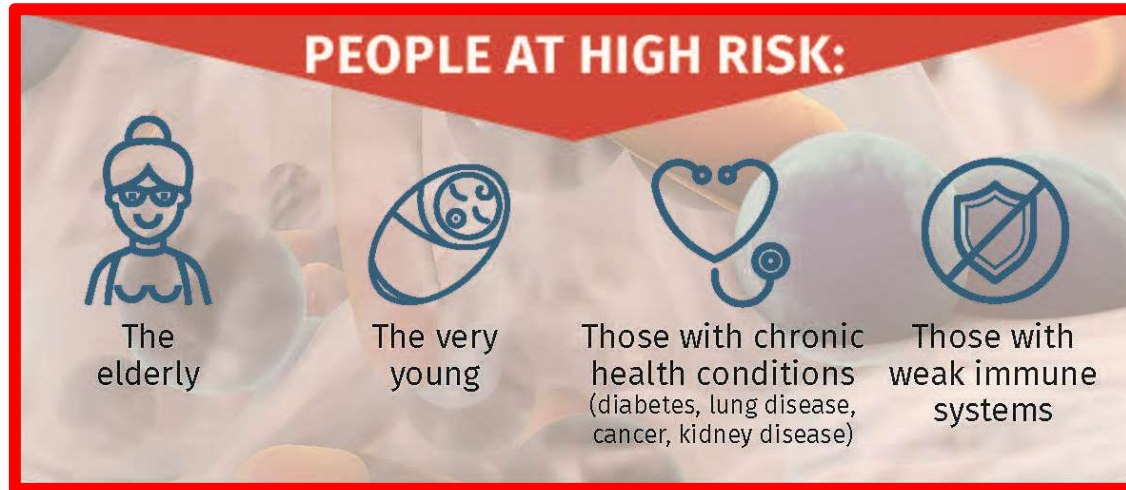
- Source:

Centers for Disease Control and Prevention - [What is sepsis?](#)

National Institute of General Medical Sciences - [Sepsis](#)

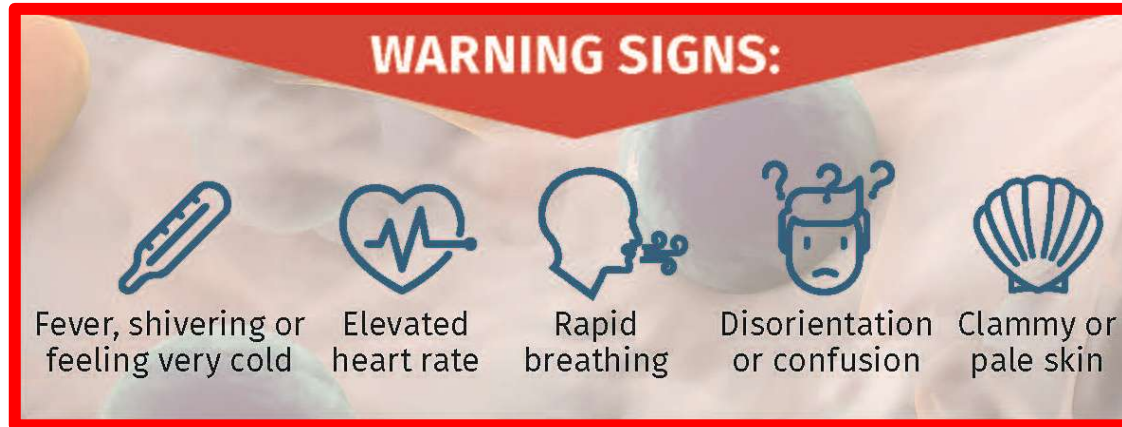


People at high risk of sepsis



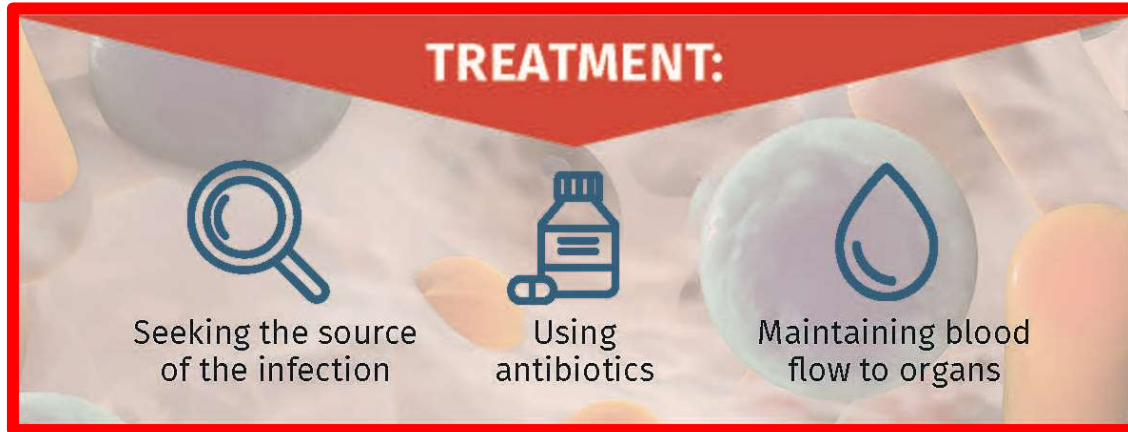
- Source:
Centers for Disease Control and Prevention –
[Who is at risk?](#)

Warning signs of sepsis



- Source:
 - Centers for Disease Control and Prevention - [Stay healthy. Protect yourself from sepsis.](#)

Treatment of sepsis




- Source:

Centers for Disease Control and Prevention - [How is sepsis diagnosed and treated?](#)




Sepsis prevention


PREVENTION:




Practice good hygiene, such as washing your hands properly and cleaning cuts




Discuss with your doctor the best ways to prevent infections



Get recommended vaccines



Be aware of the warning signs of sepsis



Seek medical care immediately when an infection does not get better or worsens

- Source:
 - Centers for Disease Control and Prevention - [How can I prevent sepsis?](#)
 - Sepsis Alliance - [Sepsis and Prevention](#)

COULD IT BE SEPSIS?
Know the Signs and Act Fast

In the United States, more than **1.7 MILLION PEOPLE** experience sepsis, an extreme reaction to an infection. Sepsis can lead to tissue damage, organ failure and death.

LEADING CAUSES:



Skin infections (such as cellulitis)



Lung infections (such as pneumonia)



Kidney infections (such as urinary tract infections)



Abdominal infections (such as diverticulitis)

PEOPLE AT HIGH RISK:



The elderly



The very young



Those with chronic health conditions (diabetes, lung disease, cancer, kidney disease)




Those with weak immune systems

WARNING SIGNS:



Fever, shivering or feeling very cold



Elevated heart rate



Rapid breathing



Disorientation or confusion



Clammy or pale skin

TREATMENT:



Seeking the source of the infection



Using antibiotics



Maintaining blood flow to organs

PREVENTION:



Practice good hygiene, such as washing your hands properly and cleaning cuts



Discuss with your doctor the best ways to prevent infections



Get recommended vaccines



Be aware of the warning signs of sepsis



Seek medical care immediately when an infection does not get better or worsens

univera HEALTHCARE

Additional Data



Sepsis Admissions

Rate of sepsis admissions per 1,000 adults (2017)	
Western New York	7.39
Finger Lakes Region	5.65
Central New York	3.59
Central New York's Southern Tier	3.70
Utica/Rome/North Country	4.00
Upstate New York	4.68

- Source:
 - Claims data from Univera Healthcare and its parent company, 2017. Claims reported are for all lines of business. Reflects utilization in the 39-county region of upstate New York. Claims reported from January 2017-December 2017, paid through February 2018.
 - *The utilization per 1,000 is based on the membership corresponding to the region of the hospital.*

Estimated Number of Sepsis Admissions

Estimated number of sepsis admissions (2017)	
Western New York	8,998
Finger Lakes Region	4,794
Central New York	2,331
Central New York's Southern Tier	1,440
Utica/Rome/North Country	3,181
Upstate New York	18,252

- Source:
 - Claims data from Univera Healthcare and its parent company, 2017. Claims reported are for all lines of business. Reflects utilization in the 39-county region of upstate New York. Claims reported from January 2017-December 2017, paid through February 2018.
 - *The estimated number of sepsis admissions in each region was calculated by applying the sepsis admissions rate per 1,000 to the population of adults ages 18 and older for each region. The population of adults ages 18 and older was obtained from the [United States Census Bureau](#) population estimates from July 1, 2017.*

Inpatient Sepsis Length of Stay

Percent of sepsis admissions with an inpatient length of stay of 4 to 9 days (2017)	
Western New York	61.0%
Finger Lakes Region	54.1%
Central New York	63.7%
Central New York's Southern Tier	57.1%
Utica/Rome/North Country	61.5%

Average length of stay in upstate New York (2017): 8.4 days

- Source:
 - Claims data from Univera Healthcare and its parent company, 2017. Claims reported are for all lines of business. Reflects utilization in the 39-county region of upstate New York. Claims reported from January 2017-December 2017, paid through February 2018.
 - *The inpatient length of stay is based on the membership corresponding to the region of the hospital.*

Sepsis Admissions with an Intensive Care Unit (ICU) Stay

Percent of sepsis admission with an ICU stay (2017)	
Western New York	28.7%
Finger Lakes Region	21.2%
Central New York	37.9%
Central New York's Southern Tier	32.6%
Utica/Rome/North Country	36.9%
Upstate New York	27.4%

- Source:
 - Claims data from Univera Healthcare and its parent company, 2017. Claims reported are for all lines of business. Reflects utilization in the 39-county region of upstate New York. Claims reported from January 2017-December 2017, paid through February 2018.
 - *The percent of admissions with an ICU stay is based on the membership corresponding to the region of the hospital.*

Hospital Re-admissions for Sepsis



- Source:
 - Claims data from Univera Healthcare and its parent company, 2017. Claims reported are for all lines of business. Reflects utilization in the 39-county region of upstate New York. Claims reported from January 2017-December 2017, paid through February 2018.
 - *Re-admissions for sepsis within 30 days after any medical/surgical admission*
 - *The total number of re-admissions related to sepsis is based on the membership corresponding to the region of the hospital.*